



Automatic Universal Gateway

Industrial communication made easy – effortlessly convert multiple protocols with a single software suite.

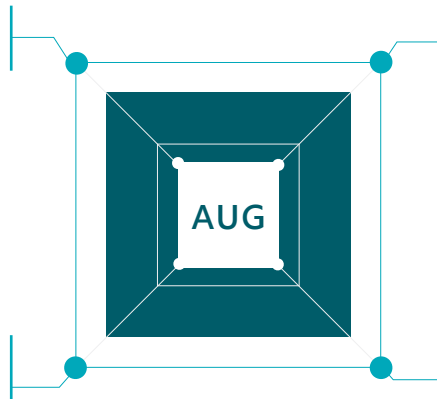
Interconnect and integrate common industrial automation communication protocols, establishing a robust connection and data foundation for the smart factory.

AUG assists you in integrating commonly used communication protocols in industrial automation

AUG is a powerful integration platform that seamlessly connects diverse communication methods across your industrial automation environment. Whether you need to access databases, communicate with PLCs, or integrate multiple industrial protocols, AUG handles it all through a unified solution. By eliminating the complexity of managing multiple drivers and communication interfaces, AUG simplifies system integration and significantly reduces implementation time. Meanwhile, AUG enables real-time data flow from various sources into databases, helping organizations integrate data and make informed decisions quickly.

Benefits

A single platform that integrates multiple communication protocols for easy and efficient management.



Offering a Web API for easy custom development and data integration by IT operators.

Allowing you to freely customize the communication output way, offering high application flexibility.

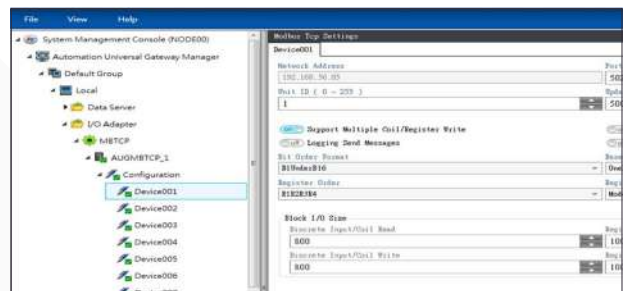
Seamlessly connecting real-time data to databases, eliminating the hassle of collecting big data.

Key features

1. Diverse communication modules and intuitive management interface

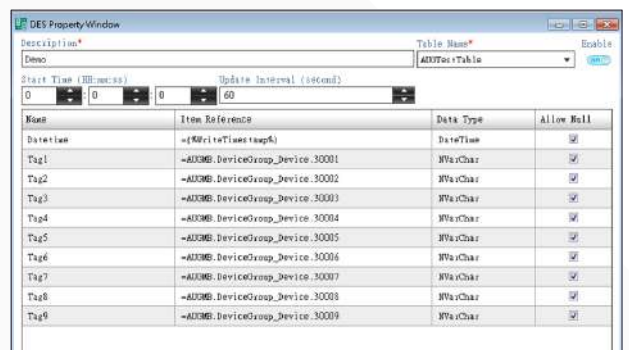
Including 7 sets of Data Server and 14 sets of IO Adapter communication modules, supporting the majority of commonly used industrial communication protocols. You can organize connected devices in a hierarchical structure for your convenience in management.

(Detailed support list available upon request or downloadable from the AUG introduction page on website.)



2. Recording real-time data into the database

For each tag, you have the flexibility to customize which database it is stored in and what data is placed in each column.



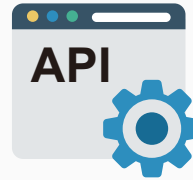
3. Diagnosing communication

Real-time monitoring of the connection status between the system and devices, as well as the real-time values and communication quality of each tag.

Item Name	Value	TimeStamp
00001	1	10/30/2018 3:46:25 PM
00002	1	10/30/2018 3:46:25 PM
00003	0	10/30/2018 3:46:25 PM
00004	0	10/30/2018 3:46:25 PM
40001	1095	10/30/2018 3:46:25 PM
40002	1221	10/30/2018 3:46:25 PM
40003	25994	10/30/2018 3:46:25 PM
40004	24626	10/30/2018 3:46:25 PM
40011 F	0.07006495	10/30/2018 3:46:25 PM
40013 F	0.4856439	10/30/2018 3:46:25 PM
40015 F	0.4561994	10/30/2018 3:46:25 PM
40017 F	0.1923892	10/30/2018 3:46:25 PM

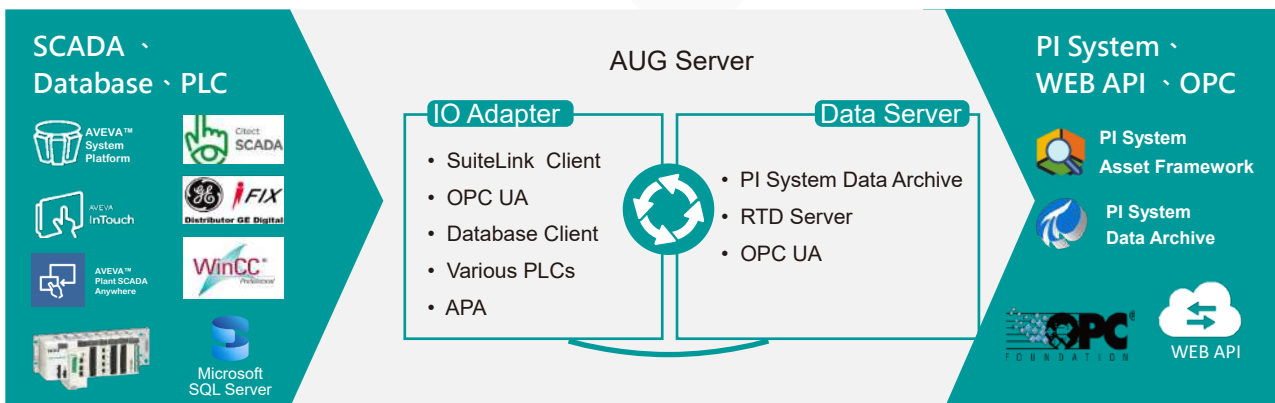
4. Offering System Integration and Custom Development

AUG excels in performing low-level data conversion, making it convenient for users to create reports, access graphical interfaces, and design custom screens, AUG offers a Web API interface, making development and integration more convenient.



Application scenarios

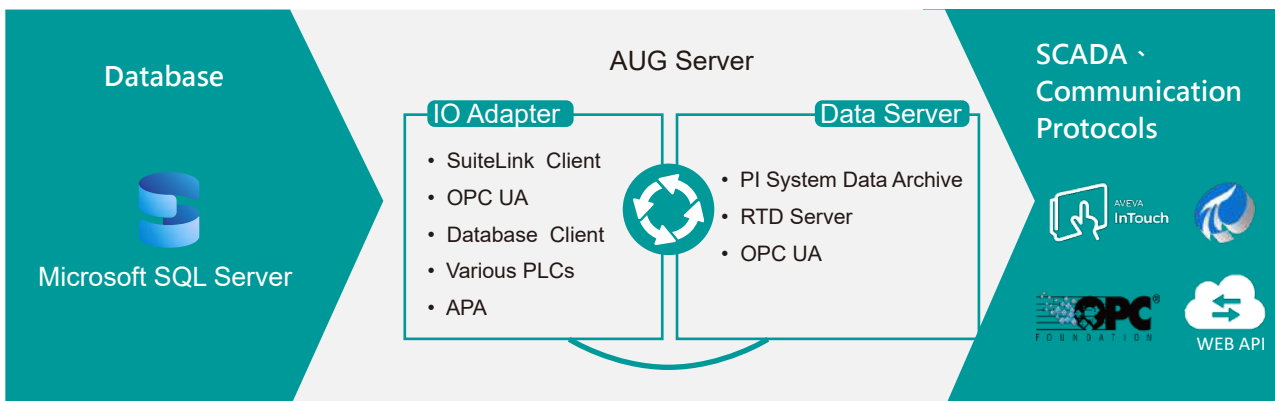
Seamless Conversion of Various Communication Protocols.



※ APA stands for AVEVA Predictive Analytics, a tool that provides time-to-failure forecasting and remedial actions, minimizing repair time and downtime.

Turning AUG into a simulator!

Leverage the database as a simulator data source to streamline system testing.



Supported communication protocols and PLC models

AUG Support List

For any specific or custom requirements, please contact our sales representatives or inquire through our official Line account.

Standard configuration Core module

Module	Server	Type	Version	Protocol
AUG Core	Microsoft	Dynamic Data Exchange (DDE) Server	Non	DDE Server
	OPC Foundation	Data Access (UA) Server	1.0x	OPC UA Server

Upstream communication Data Server module - Software

	Module	Server	Type	Version	Protocol
1	DES	Database	Microsoft SQL Server / Oracle Database	Microsoft SQL Server 2012 / 2014 / 2016 : Express / Standard / Enterprise Oracle Database 11g / 12c / 18c	Database Exchange Server
2	PI	AVEVA	PI Data Archiver	AVEVA PI System 3.4.440.477	PI
3	MBS	Modbus Organization	Modbus Slave	Non	Modbus TCP / Serial / RTU / ASCII
4	RTDS	Web	JSON data format and UTF8 encoding	Non	Real-time Data Server

Upstream communication IO Adapter module - Software

	Module	Client	Type	Version	Protocol
1	AHC	AVEVA	Historian Client	AVEVA Historian 2014 R2 SP1 / 2017 / 2023	Historian SDK
2	SLC		SuiteLink Client	AVEVA SuiteLink 2014 R2 SP1 / 2017 / 2020R2 / 2023	SuiteLink
3	APA		Predictive Analytics Web API Client (PRISM)	AVEVA Predictive Analytics 2020 (PRISM)	PRISM Web API
4	DBC	Database Client	Microsoft SQL Server	Microsoft SQL Server 2012 / 2014 / 2016 : Express / Standard / Enterprise	OLE DB
5	DDEC	Microsoft	Dynamic Data Exchange (DDE) Client	Non	DDE
6	WMI		Windows Management Instrumentation	Non	Windows
7	OPCDAC	OPC Foundation	Data Access (UA) Client	1.0	OPC UA Client
8	WEBC	Web Client	Simple Object Access Protocol (SOAP)	Non	Web SOAP
			Representational State Transfer (Restful)	Non	Web Restful

Downstream communication
IO Adapter module - PLC

	Module	PLC	Type	Protocol	Interface
1	AB	Allen-Bradley (AB)	CIP SLC500, CompactLogix, MicroLogix , ControlLogix	AB TCP	TCP
2	CP218IF	Yaskawa	CP218TX	Yaskawa PLC(Memobus)	TCP
3	FATEK	FATEK	FBs PLC	FATEK FBs Series	RS232 / 485
4	GESRTP	Emerson (GE)	90-30, 90-70, RX3i, Rx7i, VersaMax , VersaMax Micro, VersaMax Nano	GESRTP	TCP
5	GESNP		90-30, 90-70, RX3i, Rx7i, VersaMax , VersaMax Micro, VersaMax Nano	GESNP	RS-232 / 422
6	KEYENCE	Keyence	KV Nano, KV-700 / 1000 / 3000 / 5000 / 7000 / 8000	Keyence PLC	TCP
7	MB	Modbus Organization	Modbus TCP	Modbus Ethernet	TCP
			Modbus ASCII / RTU	Modbus Serial	RS-232 / 485 / 422
8	MTAQ MTFX	Mitsubishi	A Series, AnA / AnU Series, Q Series, QnA Series, iQ-R Series , iQ-F Series, FxN Series, FX3U Series, FX5U Series	Mitsubishi Ethernet	TCP / UDP
			A Series, AnA / AnU Series, Q Series, QnA Series, FxN Series, FX3U Series, FX5U Series	Mitsubishi Serial	RS-232 / 485 / 422
9	OMRON	OMRON	CS / CJ / CP / CV Series	Omron FINS Ethernet	TCP / UDP
			CS / CJ / CP / CV Series	Omron FINS Serial	RS-232 / 485
10	S7	Siemens	S7-200 / 300 / 400 / 1200 / 1500	SIEMENS S7	TCP

Downstream communication
IO Adapter module - Device

	Brand	Module	Device	Type	Protocol	Interface
1	Cooper Turbocompressor	Quad2000	Air compressor	Quad 2000	Quad 2000 Protocol	RS-232
2	TOKYO SOKUSHIN	CV375	Seismometer	CV-375 Network Sensor	TOKYO SOKUSHIN CV375	TCP
3	Omni	OMNI 3000 / 6000	Flow Computers	OMNI 3000 / 6000 Flow Computers	Modbus (Special)	RS-232
	METTLER TOLEDO	WEIGHING	Weighing Indicator	IND231 / IND236 / IND780 Weighing Terminal	Mettler Toledo IND	RS-232
	KUBOTA		Weighing Indicator	KL-D1000 Weight Indicator	Kubota KL D1000	RS-232
	UWE		Weighing Indicator	UWE 1705 Digital Weighing Indicator	UWE1705	RS-232
	A&D Weighing		Weighing Indicator	AD-4328	A&D Weighing Protocol	RS-232 / TCP
4	Honeywell	CM4	Paper Belt Detector	CM4 Toxic Gas Monitor	Honeywell CM4	RS-232 / 422 / 485

System compatibility



Operating system

- ◆ Windows 10 / 11 Pro or above
- ◆ Windows Server 2022 or above; Standard / Data Center



Supported browsers

- ◆ Microsoft Edge
- ◆ Mozilla Firefox
- ◆ Google Chrome
- ◆ Safari



Database

- ◆ Microsoft SQL Server 2022 or above; Express / Standard / Enterprise



Hardware requirements

- ◆ CPU : 4 cores or higher · 2.6 GHz or above
- ◆ RAM : DDR4 16 GB or above
- ◆ SSD with at least 1 TB
- ◆ Network : 1 Gigabit Ethernet
- ◆ Display : 1920 × 1080 or higher

※ Content may change without prior notice; Senwaiy Tech reserves the right to modify at any time. 2026. 05



Singapore

✉ E-Mail : info@senwaiytech.com

☎ TEL : +65-69935188

📍 Address : No. 21 Bukit Batok Crescent #13-77, Wcega Tower, Singapore 658065

Kaohsiung

☎ TEL : +886-7-8150127

📠 FAX : +886-7-8150161

📍 Address : 6F-1, No. 286-9, Hsin-Ya Road, Kaohsiung, Taiwan 80673

Kunshan

☎ TEL : +86-512-36600151

📍 Address : 3F, No. 498, Changjiang Middle Road, Kunshan, China, 215337



Learn More

🌐 www.senwaiytech.com