



Intelligent Inspection System - Inspec

Digital inspection solution - achieve paperless, smart inspections.

Efficiently manage inspections with swift dispatch, accurate personnel reporting, and automated report generation.

Efficient inspections, intelligent outcomes.

Unexpected downtime can cost businesses up to millions dollars in losses. According to NEC's research, one of the most effective ways to detect potential failures in factory electrical equipment is through routine inspections.

However, traditional paper-based inspections come with inconveniences and challenges. That's why the trend for both domestic and international businesses today is to digitize and smarten up their inspection processes! Inspec, the Smart Inspection System, is a tool that helps you dispatch work quickly, assists personnel in accurate reporting, and automatically generates inspection reports. It enables paperless and intelligent inspections.

Inspec supports multiple platforms, allowing you to easily set inspection schedules and quickly check inspection statuses through mobile devices or web interface. Say goodbye to the hassles of paper-based inspections and embark on your journey to smart inspections today!

Benefit

Automatically organize inspection reports and statistical data.

Providing pre-inspection SOPs to reinforce personnel safety during inspections.



Simplify the complex paper-based inspection procedures.

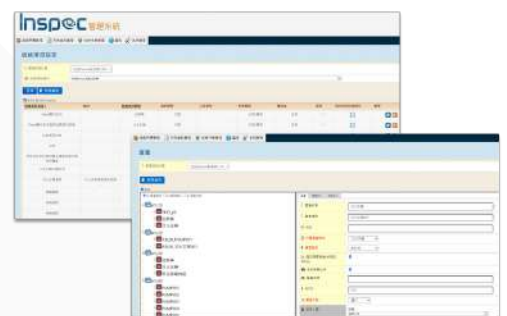
No longer waste significant time and manpower inputting inspection data into computers.

Establishing standardized inspection processes that complies with PDCA (Plan-Do-Check-Act) principles

Key features

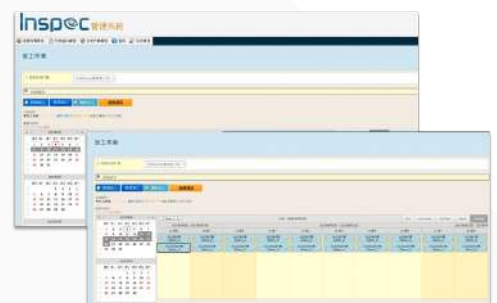
1. Establish a standardized inspection system

Quickly creating inspection areas and personnel lists in a tree-like structure on the platform, and easily configure inspection tasks and SOP reminders for each piece of equipment.



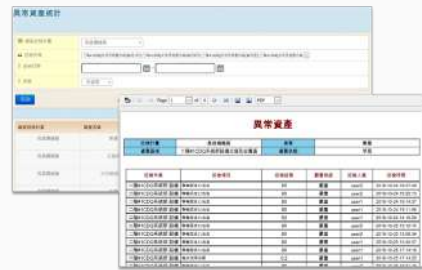
2. Plan inspection shifts and schedules.

Utilize calendars and timetables to intuitively schedule inspection time slots and intervals. Accessing inspection information is also made simple and organized.



3. Automatically compile inspection data to generate reports.

Inspec automatically compiles and organizes data entered by inspection personnel, generating comprehensive reports that can be viewed online or downloaded for record-keeping.



4. Handheld device & Inspection app.

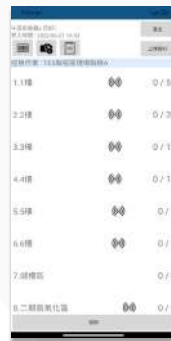
Android



Download task and begin inspections



View inspection assignments



Inspect items and record using scans.



Document handover details.



Capture and upload on-site issues with photos

5. iOS web-based inspection interface.



Download task and begin inspections



View inspection tasks and completion status.



Fill out inspection items and document handover details.



Capture and upload on-site issues with photos

Highlight

The management center



The reporting system offers statistical analysis, sorting, and tracking of abnormal events based on inspection results. It seamlessly integrates with the maintenance system through a database to retrieve relevant information.



Enables scheduling of required inspections based on the equipment status (e.g., operational, offline, under maintenance)..



Allows for setting email notifications for inspection schedules and equipment anomaly alerts.



Supports shift handover record functionality and allows for customization based on existing on-site reports.



Mobile inspection through the app or web version.



Users can access the previous inspection data for the asset.



Users can access the troubleshooting SOP documents needed for equipment anomalies.



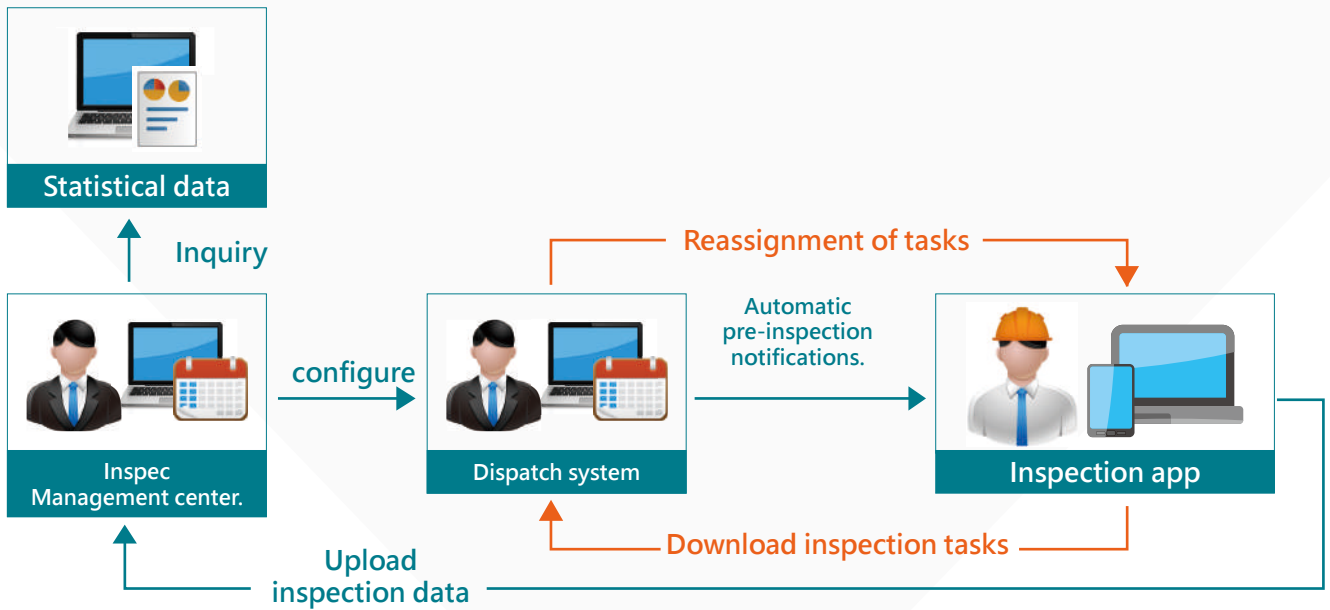
Prompting inspection personnel on the necessary auxiliary tools to carry.



Support RFID and QR code for personnel positioning and check-in during inspections.
(This feature includes a bypass function)



System architecture



System compatibility

Operating system

- ◆ Windows 10 / 11 Pro or above
- ◆ Windows Server 2022 or above; Standard / Data Center

Supported browsers

- ◆ Microsoft Edge
- ◆ Mozilla Firefox
- ◆ Google Chrome
- ◆ Safari

Database

- ◆ Microsoft SQL Server 2022 or above; Express / Standard / Enterprise

Hardware requirements

- ◆ CPU : 4 cores or higher · 2.6 GHz or above
- ◆ RAM : DDR4 16 GB or above
- ◆ SSD with at least 1 TB
- ◆ Network : 1 Gigabit Ethernet
- ◆ Display : 1920 × 1080 or higher

Recommendation for mobile device



Choose the Right Device for Your Needs

Select from regular consumer-grade mobile devices or opt for rugged Android-based or industrial-grade models to match your usage scenario and operational environment.

Brand	Model name
CipherLab	RS36
Amobile	G60 Pro
Unitech	PA720 + industrial-grade mobile computer

※ Content may change without prior notice; Senwaiy Tech reserves the right to modify at any time. 2026. 03



Singapore

✉ E-Mail : info@senwaiytech.com

☎ TEL : +65-69935188

📍 Address : No. 21 Bukit Batok Crescent #13-77, Wcega Tower, Singapore 658065

Kaohsiung

☎ TEL : +886-7-8150127

📠 FAX : +886-7-8150161

📍 Address : 6F-1, No. 286-9, Hsin-Ya Road, Kaohsiung, Taiwan 80673

Kunshan

☎ TEL : +86-512-36600151

📍 Address : 3F, No. 498, Changjiang Middle Road, Kunshan, China, 215337



Learn More

🌐 www.senwaiytech.com